

PRODUCT OVERVIEW

OpenText Lens

Gain end-to-end visibility into data flows between enterprise apps and trading partner systems



Increase end-to-end data visibility



Improve business agility



Unify data visibility



Empower more users with insights

Data visibility enables accurate and timely insights on business processes that are critical for improving operational efficiency, delivering improved customer service and finding new sources of customer value.

But many enterprise systems remain siloed, preventing unified visibility into business operations. This is because most integration platforms used to connect disparate systems move data behind the scenes, limiting access to the wealth of information that data integration can reveal.

OpenText™ Lens™ is a cloud-based data visibility solution that helps monitor data flows between any system or data source, within the enterprise and with business partners. The solution offers visibility into all integration data flow with a single solution to empower proactive incident management by alert and event notification for increased business continuity.

Increase end-to-end data visibility

Gain visibility into complex data flows across all systems for complete insight into business processes. Detailed views and collaboration features help optimize business processes and reduce problem resolution time and cost.

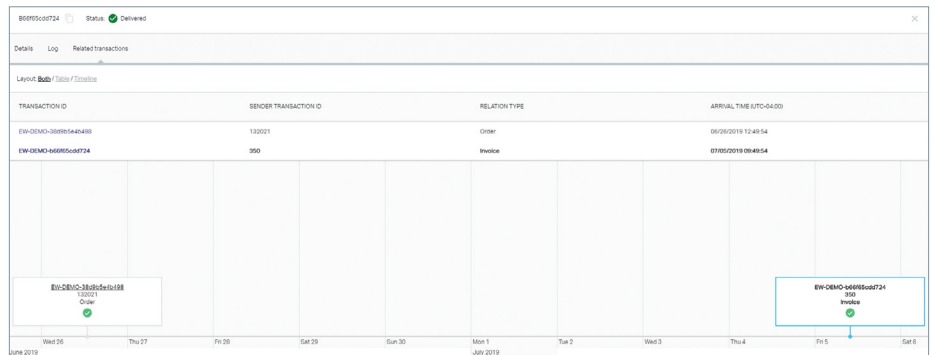
Improve business agility

Improve responsiveness to business events or non-events. Manage unforeseen issues and mitigate risk before they impact the business.

The screenshot shows the 'opentext Lens' interface with a search bar and navigation tabs. A list of transactions is displayed with columns for Arrival time, Sender name, Receiver name, Liaison transaction id, and Transaction type. A sidebar on the left contains filters for Date range, Sender name, Receiver name, Status, and FA status. A detailed view of a transaction is shown below the list, including Inbound and Outbound information, Interface details, and Additional Information.

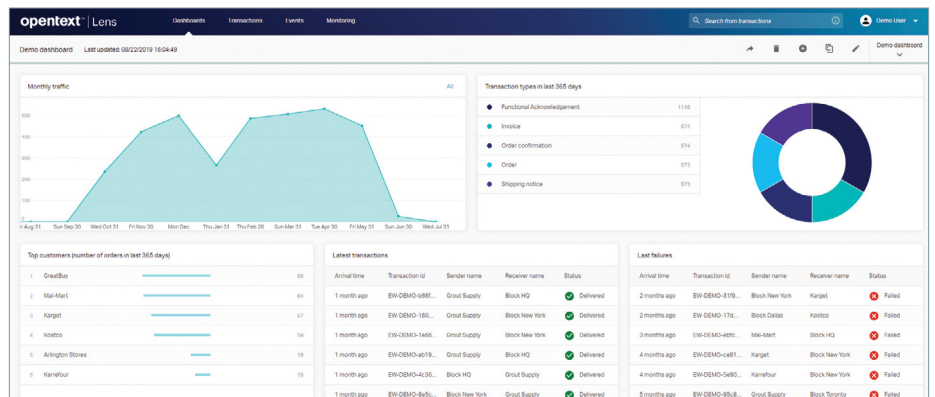
Unify data visibility

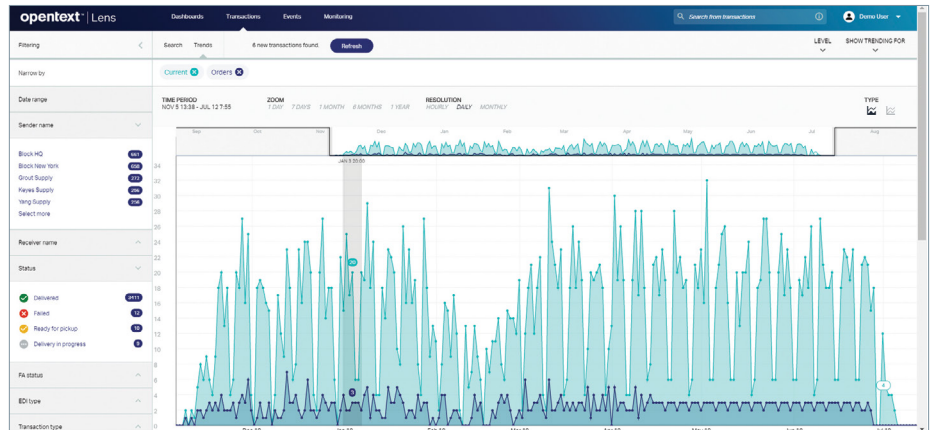
Improve control and transparency into data with increased visibility and efficiency for reporting and early problem identification.



Empower more users with insights

Enable both technical and non-technical users to access and gain insights on the most meaningful data for their role with an intuitive user interface that requires little to no training.





Extract information advantage

Extract information about data in motion and utilize relevant business context to improve efficiency and data driven decision-making.

OpenText Professional Services—Enabling customers’ success in their digital journey

- OpenText™ Managed Services
- OpenText Consulting Services
- OpenText Learning Services
- OpenText Managed Services in the Cloud
- Optimize Assist Services

OpenText Lens features

Personalized dashboards and filters	Creates customized dashboards and search filters to quickly and easily access the information most relevant for specific roles
Powerful search capabilities	Offers multiple search options to quickly find specific transactions or data types
Transaction lifecycle management	Provides detailed insights on the movement of data as it supports various stages of business processes
Notifications and alerting	Alerts users of activity, non-activity and process exceptions based on configurable business rules
Trending and timeline comparison	Allows users to explore data and identify trends and patterns in all integrations over time
Data collaboration	Improves data collaboration with employees and trading partners through easy to share saved reports and search filters
Payload encryption and viewing	Encrypts sensitive payload data and makes non-sensitive payloads available to help monitor and analyze business processes

Video

Related solutions

Enterprise application integration »

Integration platform-as-a service »

Enterprise data management »

Data tokenization »

Learn more

Lens is a powerful, user-friendly cloud solution that provides visibility into data flows between enterprise applications, customers, suppliers and partners. Whether monitoring business process health against KPIs or managing timely responses to electronic orders received from customers, Lens enables end-to-end visibility into data-driven business processes.

With the Lens UI, users can:

- Access the health-check dashboard
- Get alerts on critical situations
- Drill down to details of integration activities
- Explore past integration activities

About OpenText

OpenText, The Information Company, enables organizations to gain insight through market leading information management solutions, on-premises or in the cloud. For more information about OpenText (NASDAQ: OTEX, TSX: OTEX) visit: [opentext.com](https://www.opentext.com).

Connect with us:

- [OpenText CEO Mark Barrenechea's blog](#)
- [Twitter](#) | [LinkedIn](#)